



## 1346 ProxKey® II Keyfob Order Form

Please ensure each required option has been checked with the appropriate choice to fulfill a completed order form.

Completed Order Forms can be faxed to 714-532-4234 or e-mailed to sales@IDcardPrinterSavings.com

### Customer Information

Company Name _____	Phone _____
Contact Name _____	Fax _____
Address _____	Email _____
Address _____	Web Order # _____

**1346 Base Model**

#### Programming (Check One)

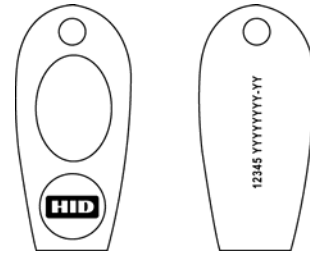
- L - Programmed, Low Frequency (125 kHz). Specify Programming Information.  
 N - Non-Programmed, Low Frequency (125 kHz). Programming Information Not Required.

#### Front Packaging

- S - Standard HID Logo

#### Back Packaging

- S - Standard



Front Packaging

Back Packaging

12345 = Keyfob ID Number  
 YYYYYYYY-YY = Sales Order Number

#### Keyfob Numbering<sup>1</sup> (Check One)

- M - Sequential Matching Internal/External (Inkjetted)  
 N - No External Card Numbering  
 S - Sequential Internal/Sequential Non-Matching External (Inkjetted)  
 R - Random Internal/Non-Matching Sequential External (Inkjetted)  
 A - Sequential Matching Internal/External (Engraved)<sup>2</sup>  
 B - Sequential Internal/Sequential Non-Matching External (Engraved)<sup>2</sup>  
 C - Random Internal/Non-Matching Sequential External (Engraved)<sup>2</sup>

#### Slot Punch<sup>3</sup>

- N - No Option

Please enter your final ProxKey options from check boxes above. Example: 1346LSSMN

Final Part Number	1346		S	S	N	-	(Optional Artwork #)
-------------------	------	--	---	---	---	---	----------------------

### 125 kHz ProxKey Programming Information

Bit Numbers \_\_\_\_\_ (example: 26 bit)      Format Number \_\_\_\_\_ (example: H10301)

Facility Code \_\_\_\_\_

(Custom Formats) Site Code \_\_\_\_\_ City Code \_\_\_\_\_ OEM Code \_\_\_\_\_

Internal Key No. Start \_\_\_\_\_ Stop \_\_\_\_\_

External Key No. Start \_\_\_\_\_ Stop \_\_\_\_\_

Special Instructions: \_\_\_\_\_

<sup>1</sup> The external number is placed on the back of the Keyfob.

<sup>2</sup> For Laser Engraved external numbers, consult factory for lead times and cost.

<sup>3</sup> Key Ring sold separately (Part Number: 57-0001-02).